

# BUILDING BRIDGES

CORRECTIONAL BEST PRACTICES

WORLDWIDE  
PERSPECTIVES



**ICPA**  
**12<sup>th</sup> Annual**  
**Conference**

**October 24-29, 2010**  
**Ghent, Belgium**



The International Corrections and Prisons Association (ICPA) and the Belgium Federal Public Service of Justice look forward to welcoming you to the City of Ghent and to the ICPA 12<sup>th</sup> Annual Conference. We hope you find this information leaflet to be a helpful overview of the event. Should you have any questions or require further assistance, please contact ICPA.

Hosted by the



**Belgium Federal Public**  
**Service of Justice,**  
**DG EPI, and**  
**CDRGA/SCRTP**

and in collaboration with



**Ghent University**  
**Institute for International**  
**Research on Criminal Policy**

## Helpful Information

### Visas

☼ **Need a visa?** – Certain identity documents are required for travel to Belgium. Citizens of the European Union (usually) only need an identity card or passport. For citizens of other countries a visa may be required. To determine whether or not you need a visa, please go to the website of the Belgian Federal Public Service of Foreign Affairs, Foreign Trade and Development Cooperation

([http://diplomatie.belgium.be/en/services/travel\\_to\\_belgium/visa\\_for\\_belgium/visa\\_needed/](http://diplomatie.belgium.be/en/services/travel_to_belgium/visa_for_belgium/visa_needed/)) and fill in the criteria.

☼ In some cases, the visa application procedure may take a long time so you should submit your application as early as possible. For a short stay, you should normally apply for your visa four weeks prior to departure.

☼ **Problems?** – If you experience any problems regarding your visa application, please contact:  
Ms. Inge Nagels, Belgian Prison Service  
[inge.nagels@just.fgov.be](mailto:inge.nagels@just.fgov.be)  
(0032) 2 542 82 73

### On Arrival

☼ The best way to travel from Brussels to Ghent is by train. Staff from the Belgium Prison Service will be at Brussels Airport to direct delegates to the train service. Attendees who need assistance should proceed to the lower level of the airport where the train station is located.

☼ The price for a single fare (Brussels Airport to Ghent-St-Pieters) is €11,25. From Ghent-St-Pieters station, you can take several busses and trams to the center of Ghent for a nominal fare. Prison staff will also guide you when you arrive at Ghent railway station.

☼ Taxi service from Brussels airport to Ghent will cost €95 per taxi.

☼ Other arrival destinations that provide easy access to Ghent by train include Paris and Amsterdam.

### Currency / Money

☼ The Belgian currency is the Euro. Most major credit cards are accepted throughout the city.

### Weather

☼ Average Ghent weather in October:  
Maximum: 15°C / 59°F | Minimum: 8°C / 46°F



### Conference Attire

☼ Business professional attire is best for the opening ceremonies on Monday morning.

☼ Daily dress for conference sessions/workshops is business casual.

☼ The ICPA Awards Dinner (Wednesday) is a chance to dress-up or sport fashionable attire unique to your homeland.

☼ Low, comfortable shoes are a must for walking along the cobbled streets of Belgium!

### Shipments:

☼ Materials may be sent to the conference venue in advance, if required. Packages sent by courier should be addressed as follows:

University of Ghent  
Het Pand

**Attention: Mieke Dutré ( ICPA )**

Onderbergen 1  
9000 Gent, Belgium

Telephone: +3292648305/+3292648307

☼ Deliveries should be scheduled to arrive on or after Wednesday, 20 October 2010.

*(Please do not send any packages prior to the specified date.)*

Look for the



ICPA information  
desk at Brussels  
Airport.

## The Venue

### ICPA 12<sup>th</sup> Annual Conference

October 24-29, 2010 – Ghent, Belgium

One of the obvious benefits of the ICPA annual conference is the opportunity to experience a different part of the world each year. Every location makes its own unique cultural contribution to the event, in terms of corrections as well as the setting. Ghent will certainly maintain that standard – providing a one-of-a-kind venue and a mix of medieval architecture, much of which remains intact and is remarkably well preserved and restored.

Ghent is located in the Flemish region of Belgium. It is the capital and biggest city of the East Flanders province. The city started as a settlement at the confluence of the Rivers Scheldt and Leie and in the Middle Ages became one of the largest and richest cities of northern Europe. Today it is a busy city with a port and a world renowned university.

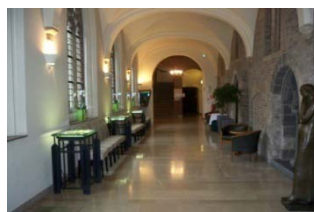


📍 Entry grounds; 🗣️ Interview and exterior views of Het Pand

The 2010 conference sessions and workshops will be held at "Het Pand", the Cultural Centre of Ghent University. "Het Pand", a former Dominican monastery, is located in the historical center of the city, on the banks of the river "Leie". The oldest parts of this impressive building date from the 13th century. Over five centuries it was extended and refashioned in a number of different styles. Since its rehabilitation and restoration, completed in 1991, "Het Pand" has been offering a wide range of possibilities for the organization of scientific congresses and cultural events. "Het Pand" houses some valuable collections, such as the rich ethnographical and archaeological collections of the university, the Museum for the History of Medicine, full-size photographs of paintings of Brueghel and Early Flemish Masters, and an interesting collection of stained glass.



Overlooking entry grounds



Entry Hallway



Plenary Room



Workshop Room



Break Area



Outdoor Courtyard



Historic Library



Workshop Room

## Conference Program

The ICPA 2010 Conference – **“Building Bridges”** – will consider how partnerships and collaborative working with and beyond organizations have improved service delivery across the correctional spectrum. It will seek to explore how prisons and community agencies can work effectively with each other and with other agencies to improve the transition from custody to the community and to improve and support interagency co-operation. Our program, comprised of 60-80 plenary and workshop, sessions will attract a significant number of the world’s leaders and experts in corrections from the public, voluntary, and private sectors.

### Overview

Sunday	Monday	Tuesday	Wednesday	Thursday	Friday
Registration ICPA Welcome Reception	Opening Ceremonies Belgian Day Host Country Reception - <i>Handelsbeurs</i>	Full day of plenary and workshop sessions ICPA Annual General Meeting Beer tasting	Full day of plenary and workshop sessions ICPA Awards Dinner - <i>Flemish Opera House</i>	Full day of plenary and workshop sessions Beer tasting	Prison tours Cultural day (participants are free in the afternoon to explore the country)

## Prison Visits

Bruges	Ghent	Ittre	Nivelles
Since 1991 the prison of Bruges is a closed prison for convicted and remand adult inmates and is one of the largest prisons in Belgium accommodating about 608 inmates. There are sections for male and female prisoners and a high security section for prisoners posing a threat to the safety of their fellow inmates and prison staff. Since 2009 the prison Bruges started with a drug free zone.	In 1862 the prison of Ghent was built according to the famous Ducpétiaux model (‘star shape’). About 283 convicted and remand inmates, male and female, are accommodated in this closed prison. There is also a section for incarcerated persons suffering from a mental illness.	Built in 2002, the prison of Ittre is one of the most recent and modern correctional facilities in Belgium. It is a maximum security prison that accommodates up to 420 male convicted inmates.	Inspired by the Austrian prisons of that time, the prison of Nivelles was built in 1904 in the shape of a Latin cross. During the 1990’s the facility was completely renovated and two supplementary prison wings were constructed. With a maximum capacity of 192 the prison houses convicted and remand male inmates.

## ICPA 2010 Awards Program

Each year, the ICPA Awards Program recognizes outstanding progress and excellence of individuals and agencies which support the ICPA mission of *“advancing professional corrections.”* Awards are made in eight categories, for which nominations can be made to the Awards Committee via the ICPA website. Winners are notified and invited to attend the annual conference to receive their award and formal acknowledgement of their achievements.

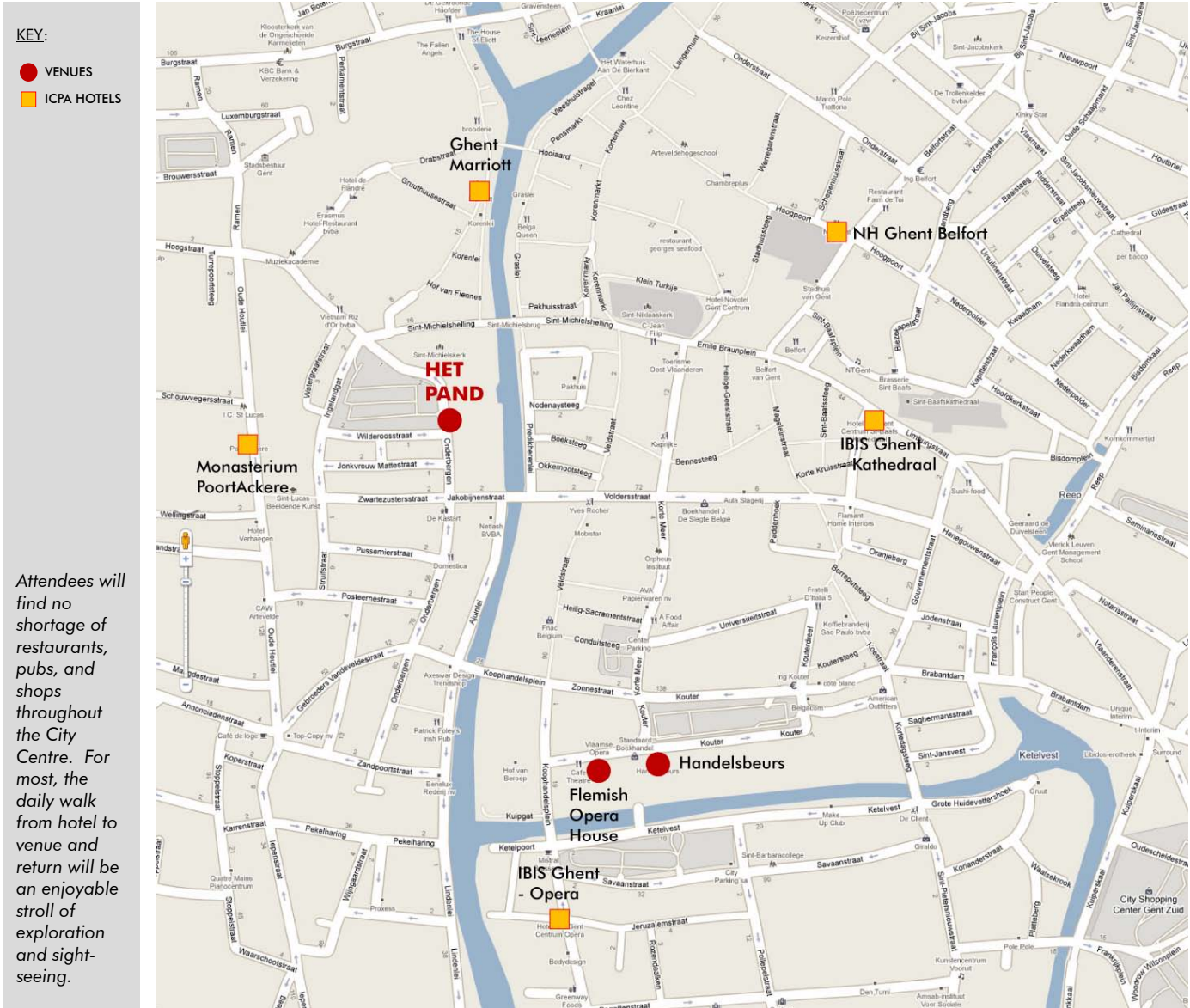
### ICPA Award Categories

①	②	③	④	⑤	⑥	⑦	⑧
President’s Award	Community Corrections	Management and Staff Training	Outstanding Correctional Service Employee	Research	Correctional Health Care	Offender Management and Reintegration	Outstanding Contribution to the Association
PRESIDENT’S SELECTION							

## Accommodations

This year delegates can select from five different hotel options. ICPA has negotiated rates and established blocks of rooms in a range of locations, all within a comfortable walking distance of a half-mile or less from Het Pand (and from each other). As in many European cities, walking is the best way to get around in Ghent, although some of the more adventurous hire bicycles. Taxis are somewhat expensive. Comfortable walking shoes are a necessity, and ladies are encouraged to stay away from high heels due to the cobblestone sidewalks.

The following diagram illustrates the proximity of the various locations within the general conference area.



**IMPORTANT NOTE:** It is strongly recommended that bookings are confirmed as far in advance as possible. A general description of each location where accommodation arrangements have been negotiated for ICPA conference delegates follows. ICPA will maintain room blocks for as long as possible, but be advised that **ICPA HAS VERY LIMITED ABILITY TO ACCOMMODATE LAST-MINUTE ARRANGEMENTS**, as we will very likely be required to release any unsold rooms well in advance of the event.

Use of the ICPA room blocks is encouraged; however, we are aware that Ghent offers a broad variety of other accommodation options. We would ask that you indicate whether or not you have a confirmed reservation during the registration process (even if an alternate location has been chosen), as this will be helpful to conference organizers in managing any administrative or logistical matters that may arise during the course of the event.

All rates shown at all locations include buffet breakfast daily.

**Ghent Marriott**  
**€170.00/night – standard room**



Centrally located, the Ghent Marriott hotel is overlooking the Korenlei on the banks of the river Leie canal and brings new design to historic old buildings.

ICPA Room Block: booking is available online through the ICPA website.

Address:  
Korenlei 10  
9000 Gent, Belgium  
+32 (0)9 233 93 93



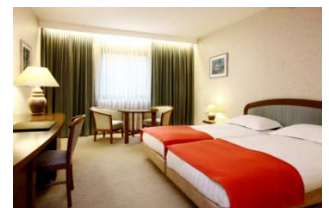
**NH Belfort**  
**€129.00/night – standard single room**



The NH Ghent Belfort is situated in the city center of Ghent, opposite the Town Hall and next to the Saint Bavo's Cathedral.

ICPA Room Block: booking is available by fax or phone. (Forms can be downloaded from the ICPA website.)

Address:  
Hoogpoort 63  
8000 Gent, Belgium  
+32 (0)9 233 33 31



€129.00/night – standard room  
€139.00/night – superior room  
€149.00/night – deluxe room  
(Add +€10/night for double)

**Ibis Ghent - Opera**  
**€99.00/night – standard room**



	<u>Single occupancy</u>	<u>Double occupancy</u>
Weekends	€92.00/night	€106.00/night
Weekdays	€99.00/night	€113.00/night

The Ibis Gent Centrum Opera hotel is situated in the Gand shopping center, next to its namesake Opera House in the heart of historical Ghent.

ICPA Room Block: booking is available by fax or phone. (Forms can be downloaded from the ICPA website.)

Address:  
 Nederkouter 24 - 26, 9000  
 Gent, Belgium  
 +32 9 225 0707



**Ibis Ghent - Cathedral**  
**€108.00/night – standard room**

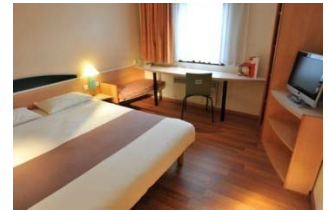


	<u>Single occupancy</u>	<u>Double occupancy</u>
Weekdays	€108.00/night	€122/night

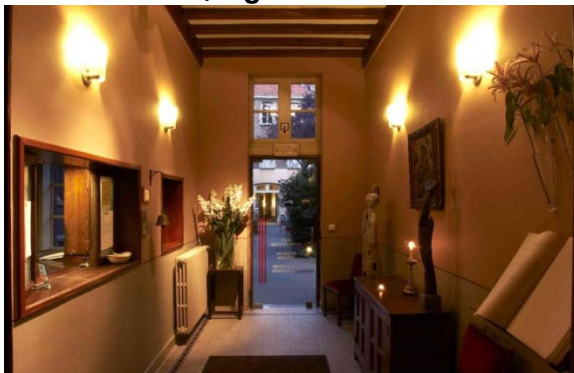
The Ibis Gent Centrum Kathedraal Hotel is located in the historic and commercial center of Ghent opposite the cathedral.

ICPA Room Block: booking is available by fax or phone. (Forms can be downloaded from the ICPA website.)

Address:  
 Limburgstraat 2  
 9000 Gent, Belgium  
 +32 9 233 0000



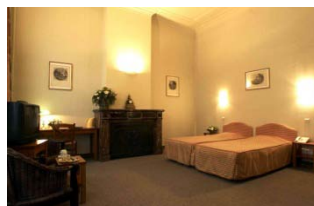
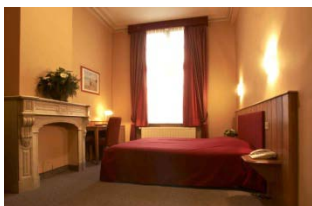
**Monasterium PoortAckere**  
**€70.50-€140.00/night**



Right in the center of town, the former monastery, Hotel Monasterium PoortAckere, is an island of peacefulness with its unique architecture and beautiful green courtyard.

ICPA Room Block: booking is available by fax or phone. (Forms can be downloaded from the ICPA website.)

Address:  
 Oude Houtlei 58  
 9000 Gent, Belgium  
 +32 (0)9 269 22 10



## Companion Program

This year's Companion Program has been carefully crafted with the assistance of staff of the Belgium Prison Service to allow participants an opportunity to experience the true beauty and culture that Belgium has to offer. The program also includes participation in the evening events enjoyed by conference delegates.

### Companion Program Tours and Activities

Monday <b>City of Ghent</b>	Tuesday <b>City of Brussels</b>	Wednesday <b>City of Bruges</b>
 <p>Gravensteen Castle St. Bavo's Cathedral Du Progress Ghent Belfry Establishment MAX</p>	 <p>Grand Place Market Square Magritte Museum Royal Museum of Fine Arts Gaasbeek Castle</p>	 <p>Beguinage of Bruges Choco Story – The Chocolate Museum Le Grand Café Belfort Canal Boat Tour Church of Our Lady De Halve Maan</p>

## Registration

**Early registration is strongly advised!** Due to capacity and logistical limitations, participation will be restricted to a maximum of 400 people. (Register online or download a registration form at: [www.icpa.ca](http://www.icpa.ca).)

<u>Costs</u>	<u>USD</u>	<u>EURO</u>
Full registration ..... <i>Includes: Conference kit; welcome reception; all plenary and workshop sessions; lunch and breaks (Mon-Thurs); host reception; and awards dinner</i>	\$695.00	€520.00
Day registration ..... <i>Includes: Conference program; all sessions, lunch, and breaks for one day; tickets for evening activities can be purchased separately on-site</i>	\$160.00	€120.00
Companion program ..... <i>Includes: Companion kit; three days group cultural and tourist activities; three days lunch; entry fees; welcome reception, host reception, and awards dinner</i>	\$345.00	€260.00
<b><u>TICKETS - AVAILABLE ON-SITE ONLY (price per person)</u></b>		
Tuesday beer tasting .....	\$40.00	€30.00
Wednesday awards dinner (included in full registration fee) .....	\$100.00	€75.00
Thursday beer tasting .....	\$40.00	€30.00

### **Cancellation penalties apply:**

25% as of September 1st | 50% as of September 15th | 75% as of October 1st | No refund as of October 15th

### **Note to Exhibitors**

Het Pand provides a limited amount of exhibition space in and near the conference break area(s). **Large display booths cannot be accommodated.** Exhibitors are encouraged to display stand-up banners. Tables for literature or other materials and chairs will be provided. Please make your requests known in advance to allow sufficient coordination time as may be required.

For additional information and to inquire about 2010 sponsorship opportunities, please contact ICPA.



### **International Corrections and Prisons Association**

[www.icpa.ca](http://www.icpa.ca)

Post Office Box 17369  
Edinburgh, Scotland  
EH12 1GE (UK)  
+44 131 244 8773/Phone  
+44 131 234 5964/Fax

1619 Sumter Street  
Columbia, South Carolina  
29201 (USA)  
+1 803 256 9728/Phone  
+1 803 753 9023/Fax

**Ed Wozniak**  
Executive Director  
edwozniak@icpa.ca  
**Fraser Bryans**  
Systems Manager  
fraserbryans@icpa.ca

**Cassandra Johnson**  
Business Manager  
cassandrajohnson@icpa.ca